



## Ολυμπιακός 95 - 45 Πανιώνιος

|     |         |     |         |     |
|-----|---------|-----|---------|-----|
| 57% | 13 / 23 | FT  | 8 / 13  | 62% |
| 53% | 20 / 38 | 2FG | 11 / 37 | 30% |
| 44% | 14 / 32 | 3FG | 5 / 21  | 24% |
| 58  | 37 - 21 | Rb  | 20 - 8  | 28  |
|     | 15      | Tu  | 18      |     |

Referees: Αυγουστούλου, Σκάρας

| By Quarter | 1  | 2  | 3  | 4  |
|------------|----|----|----|----|
| Ολυμπιακός | 26 | 24 | 20 | 25 |
| Πανιώνιος  | 10 | 16 | 14 | 5  |

| End of Quarter | 1  | 2  | 3  | 4  |
|----------------|----|----|----|----|
| Ολυμπιακός     | 26 | 50 | 70 | 95 |
| Πανιώνιος      | 10 | 26 | 40 | 45 |



## Ολυμπιακός

Coach: Γ. Παντελάκης, Αγ. Πιπίσιος

Fastbreaks: 9 / 13

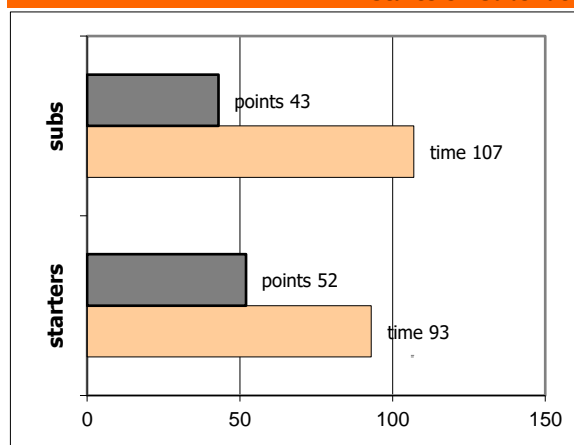
| #           | Player           | Time<br>(min) | Pts | Ft      | 2Fg     | 3Fg     | +/- | Rbs |    | As | St | Tu | Bl | Fouls |    | Eff |
|-------------|------------------|---------------|-----|---------|---------|---------|-----|-----|----|----|----|----|----|-------|----|-----|
|             |                  |               |     |         |         |         |     | de  | of |    |    |    |    | dr    | co |     |
| 4           | Μπουρνελές Γ.    | 26            | 7   | 0 / 0   | 2 / 2   | 1 / 8   | 37  | 7   | 0  | 6  | 1  | 2  | 0  | 0     | 1  | 12  |
| 5           | Αγγελόπουλος Σπ. | 13            | 3   | 0 / 0   | 0 / 2   | 1 / 3   | 10  | 0   | 0  | 1  | 1  | 1  | 0  | 1     | 2  | 0   |
| 6           | Γιακί Π.         | 12            | 7   | 2 / 2   | 1 / 2   | 1 / 1   | 25  | 2   | 1  | 0  | 0  | 2  | 1  | 1     | 2  | 8   |
| 7           | Ντάψης Δ.        | 13            | 5   | 3 / 6   | 1 / 3   | 0 / 0   | 13  | 1   | 3  | 1  | 0  | 2  | 0  | 3     | 2  | 3   |
| 8           | Λυκογιάννης Θ.   | 27            | 3   | 0 / 0   | 0 / 1   | 1 / 3   | 33  | 4   | 0  | 10 | 4  | 2  | 0  | 0     | 1  | 16  |
| 9           | Πασαγιάννης Εμ.  | 17            | 7   | 0 / 0   | 2 / 4   | 1 / 2   | 24  | 7   | 2  | 1  | 2  | 0  | 4  | 1     | 1  | 20  |
| 10          | Ροζακέας Αν.     | 15            | 19  | 0 / 0   | 2 / 4   | 5 / 5   | 29  | 3   | 0  | 1  | 2  | 0  | 1  | 0     | 2  | 24  |
| 11          | Σαλταρικός Γ.    | 17            | 4   | 0 / 0   | 2 / 3   | 0 / 1   | 16  | 3   | 3  | 1  | 2  | 1  | 0  | 0     | 2  | 10  |
| 12          | Σαπλαούρας Φ.    | 14            | 11  | 5 / 9   | 3 / 4   | 0 / 0   | 3   | 3   | 3  | 0  | 1  | 0  | 0  | 5     | 2  | 13  |
| 13          | Σεγκούρα Κ.      | 21            | 13  | 2 / 5   | 4 / 6   | 1 / 3   | 30  | 2   | 6  | 4  | 1  | 1  | 0  | 5     | 1  | 18  |
| 14          | Αμπόση Β.        | 13            | 10  | 1 / 1   | 3 / 6   | 1 / 3   | 6   | 3   | 1  | 2  | 2  | 1  | 0  | 3     | 0  | 12  |
| 15          | Αγγελόπουλος Χρ. | 12            | 6   | 0 / 0   | 0 / 1   | 2 / 3   | 24  | 2   | 1  | 0  | 1  | 0  | 0  | 0     | 1  | 8   |
| Team        |                  |               |     |         |         |         |     | 0   | 1  |    |    | 3  |    | 0     | 0  |     |
| 1st quarter |                  |               | 26  | 5 / 8   | 9 / 15  | 1 / 5   |     | 12  | 5  | 8  | 5  | 3  | 0  | 8     | 6  | 40  |
| 2nd quarter |                  |               | 24  | 2 / 4   | 2 / 6   | 6 / 10  |     | 8   | 6  | 9  | 3  | 7  | 2  | 3     | 5  | 35  |
| 3rd quarter |                  |               | 20  | 6 / 11  | 4 / 9   | 2 / 5   |     | 8   | 6  | 4  | 4  | 4  | 2  | 7     | 3  | 27  |
| 4th quarter |                  |               | 25  | 0 / 0   | 5 / 8   | 5 / 12  |     | 9   | 4  | 6  | 5  | 1  | 2  | 1     | 3  | 40  |
| Final Stats |                  | 200           | 95  | 13 / 23 | 20 / 38 | 14 / 32 | 250 | 37  | 21 | 27 | 17 | 15 | 6  | 19    | 17 | 142 |
|             |                  |               |     | 57%     | 53%     | 44%     |     |     |    |    |    |    |    |       |    | 58  |

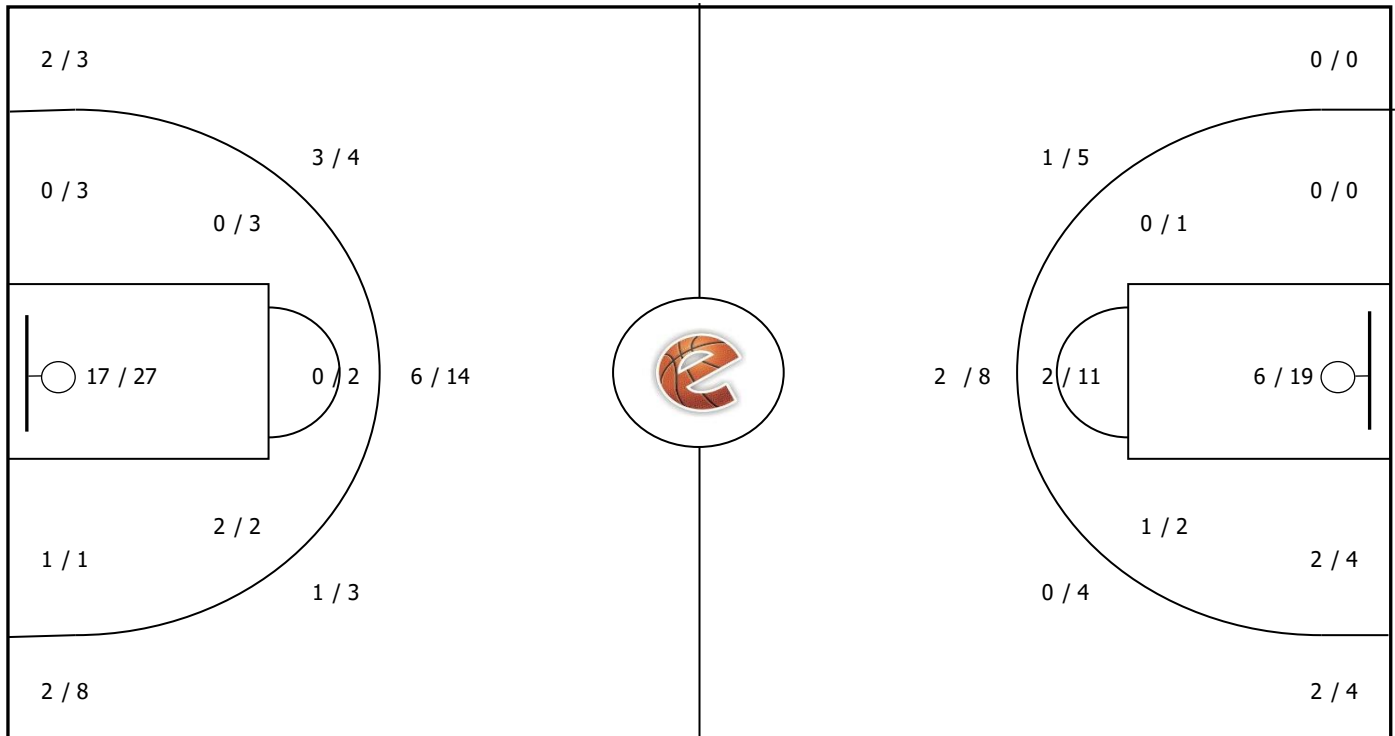
## Πανιώνιος

Coach: Α. Καλούδης

| #  | Player            | Pts | - | 3s |
|----|-------------------|-----|---|----|
| 4  | Ερμίδης Ε.        | 12  | - | 1  |
| 5  | Ντόρβας Α.        | 4   | - | 0  |
| 6  | Σφούνος Ν.        | 3   | - | 1  |
| 7  | Βασιλάκος Α.      | 1   | - | 0  |
| 8  | Χρήστου Ν.        | 6   | - | 1  |
| 1  | Ντινόπουλος       | 0   | - | 0  |
| 10 | Σεργάκης Α.       | 2   | - | 0  |
| 2  | Αλειφέρης Σπ.     | 4   | - | 0  |
| 16 | Τσιπουρλιανός Τα. | 3   | - | 1  |
| 13 | Δουράκης Α.       | 3   | - | 1  |
| 21 | Μαμούρης Π.       | 2   | - | 0  |
| 15 | Αμπατζής Ν.       | 5   | - | 0  |

## Starters - Subs ratio

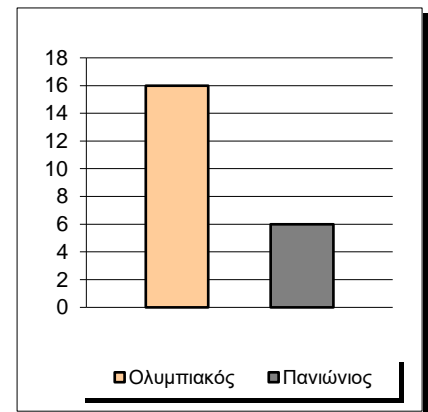
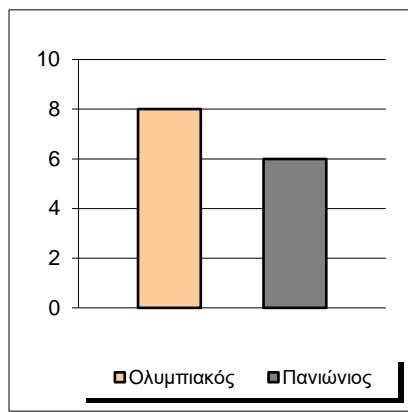
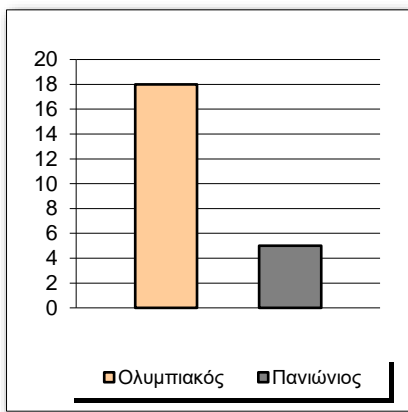




Fastbreak Pts

Turnover Pts

Second Chance Pts



Possessions

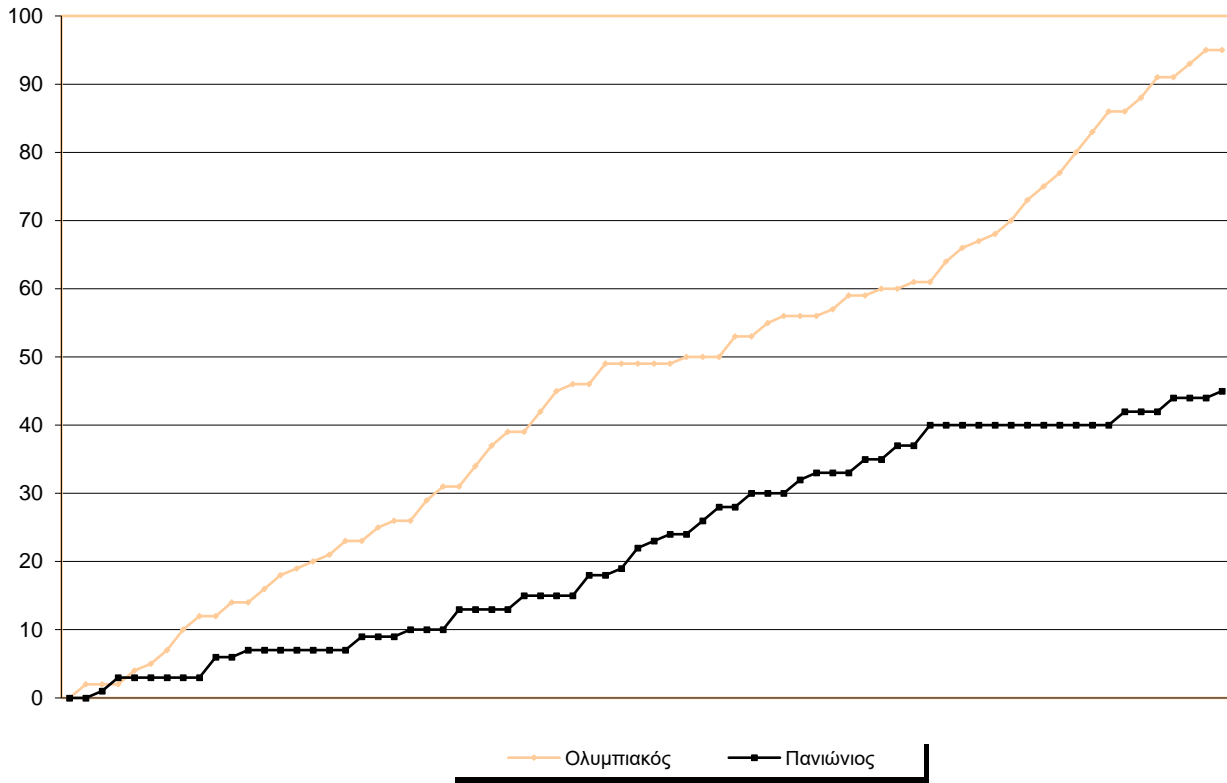
Notes

Ο Ολυμπιακός είχε 104 κατοχές,  
 εκ των οποίων κατέληξαν: 70 σε σουτ  
 15 σε λάθος  
 και 19 σε κερδ. φάουλ

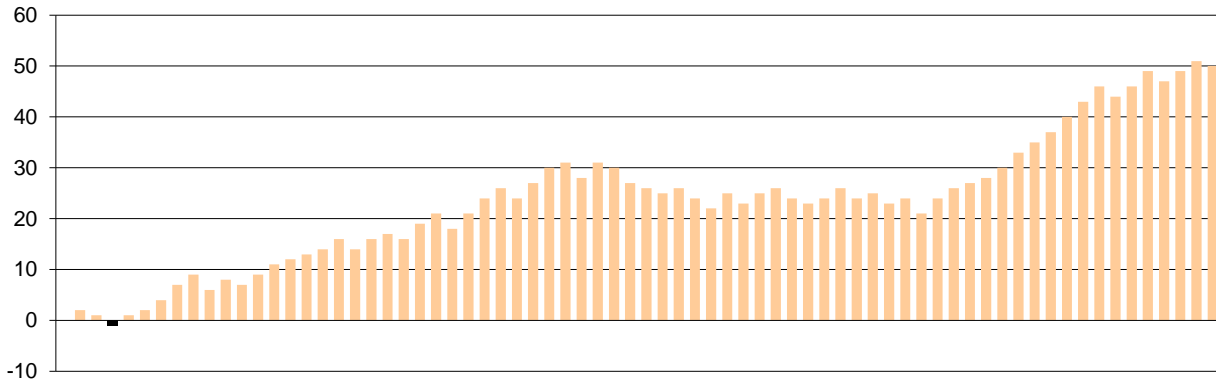


## GRAPHIC STATS

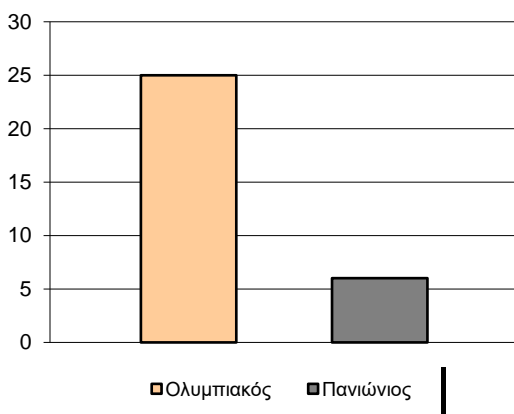
### SCORE EVOLUTION



### SCORE DIFFERENCE



### LARGEST SCORING RUN



### LARGEST LEAD

